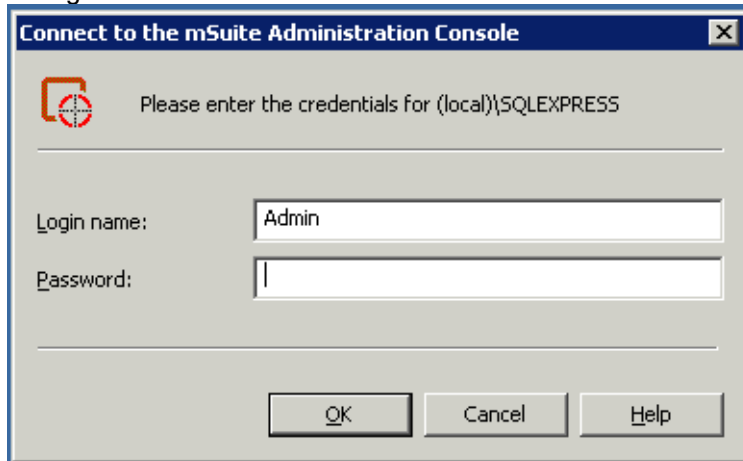
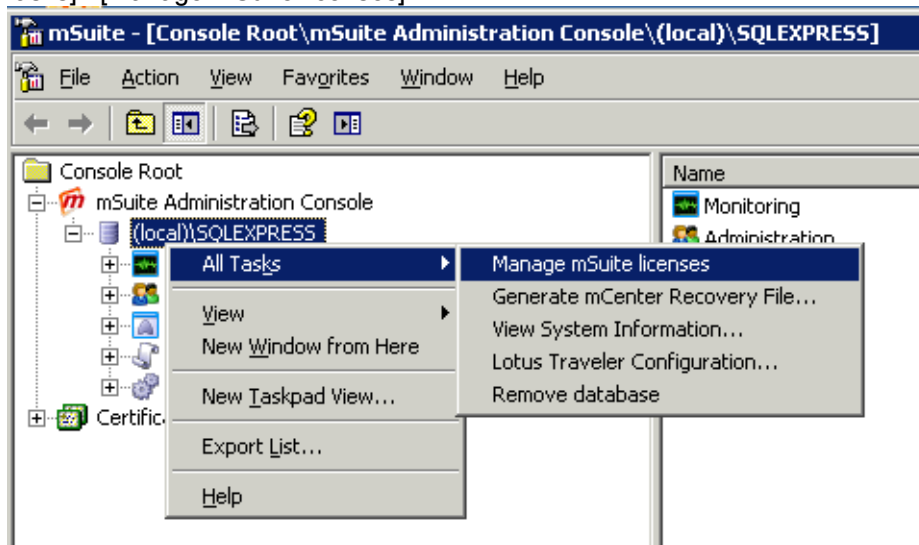


Commontime - mSuite5 Indtastning af licenskode i mSuite 5

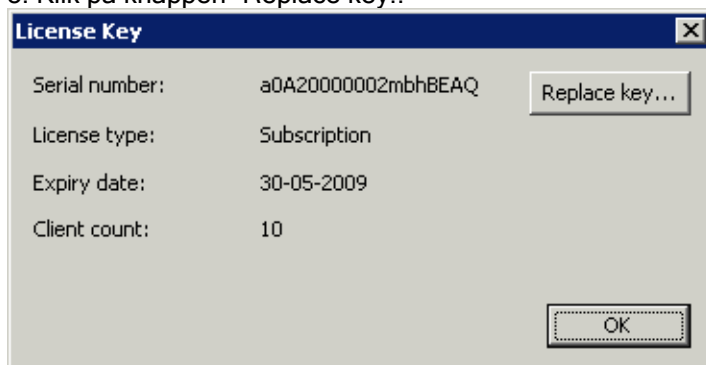
1. Log ind i mSuite Administration Console:



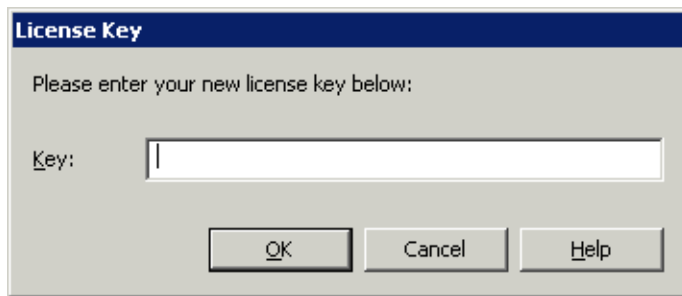
2. Højreklik på databasen (lige under mSuite Administration Console teksten). Vælg menuen [All tasks] - [Manage mSuite licenses].



3. Klik på knappen "Replace key.."



4. Indsæt den nye licensnøgle:



A screenshot of a Windows dialog box titled "License Key". The dialog has a blue header bar with the title. Below the header, the text "Please enter your new license key below:" is displayed. Underneath this text is a text input field with the label "Key:" to its left. At the bottom of the dialog, there are three buttons: "OK", "Cancel", and "Help".

6. Afslut mSuite Administration Console.

7. Genstart Commontime servicen i Windows.

Hvor kan jeg få mere information ?
<http://www.commontime.com>

Information
